

## EAP-PEAP AND MSCHAPv2 Configuration

Goal: To set up a lanforge wireless station with EAP-PEAP AND MSCHAPv2 authentication.

1. RADIUS Server is a Windows Server 2012 VM using its internal RADIUS Server specifically on interface 192.168.2.154.

The screenshot displays the Windows Server 2012 Server Manager interface. The left-hand navigation pane shows the 'NAP' (Network Access Protection) section selected. The main area is divided into two sections: 'SERVERS' and 'EVENTS'.

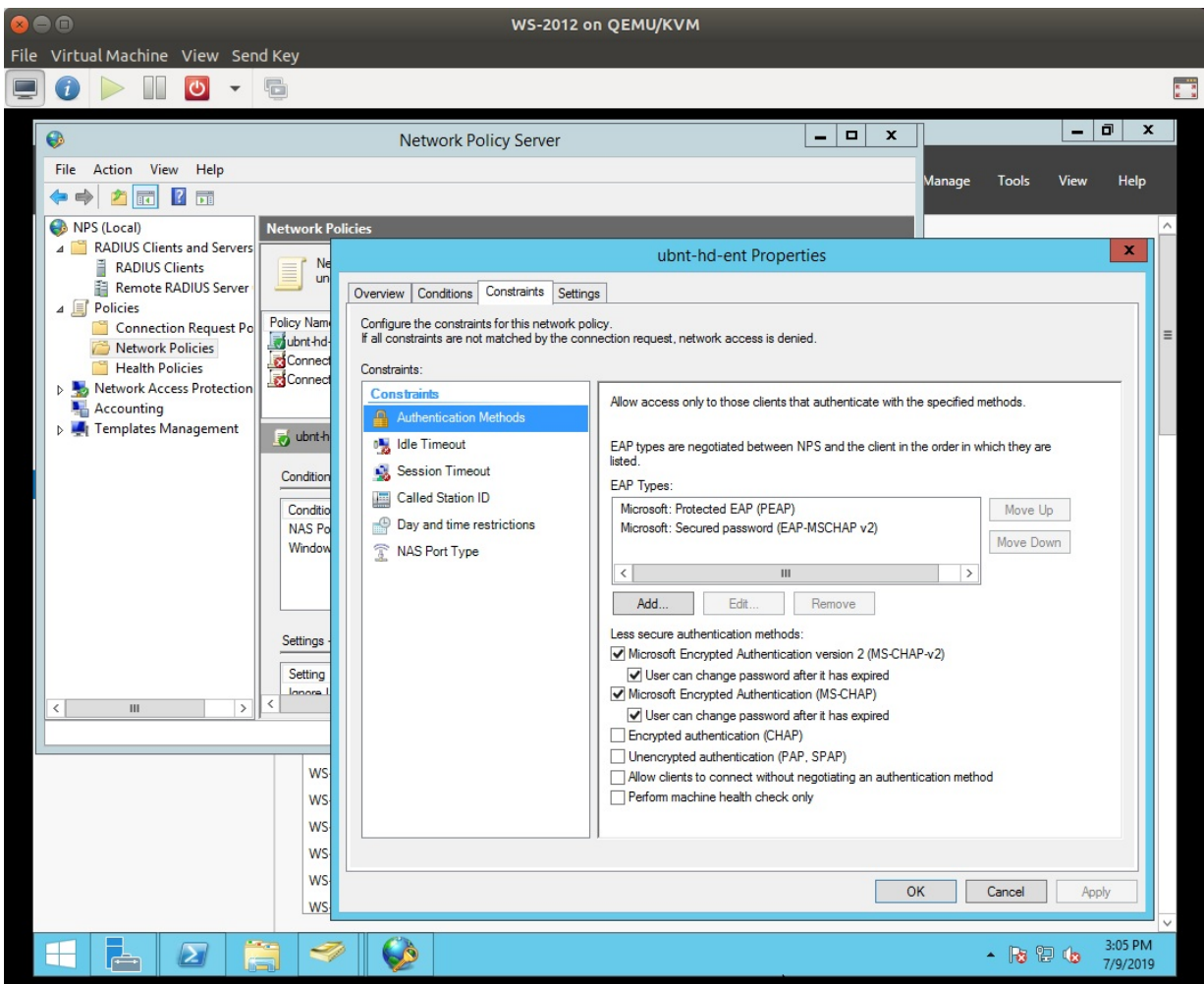
**SERVERS Section:**

- Header: SERVERS, All servers | 1 total
- Table with columns: Server Name, IPv4 Address, Manageability, Last Update, Windows Activation
- Row 1: WS-2012, 192.168.100.77, 192.168.2.154, Online - Performance counters not started, 7/9/2019 3:25:55 PM, 00252-10000-00000-AA

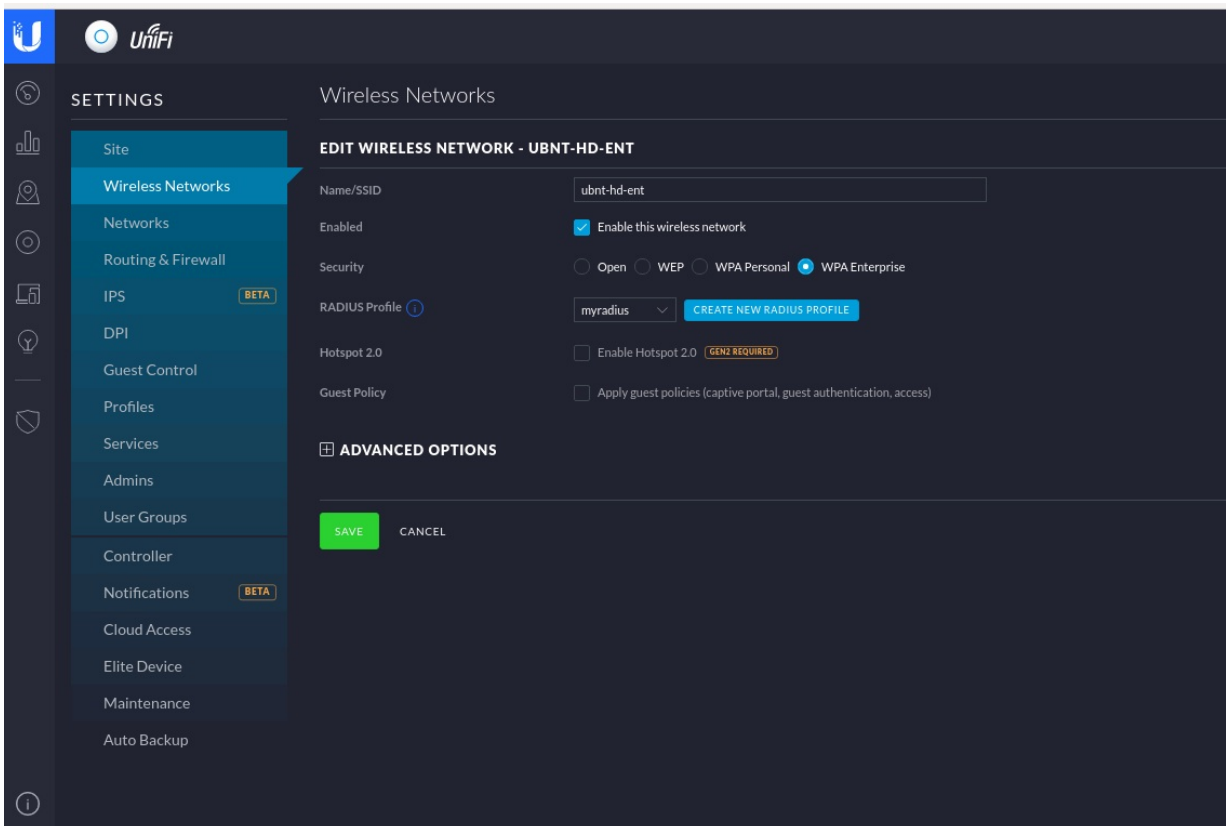
**EVENTS Section:**

- Header: EVENTS, All events | 16 total
- Table with columns: Server Name, ID, Severity, Source, Log, Date and Time
- Rows (7 shown): WS-2012, 13, Error, NPS, System, 7/9/2019 9:24:25 AM through 7/9/2019 9:23:43 AM

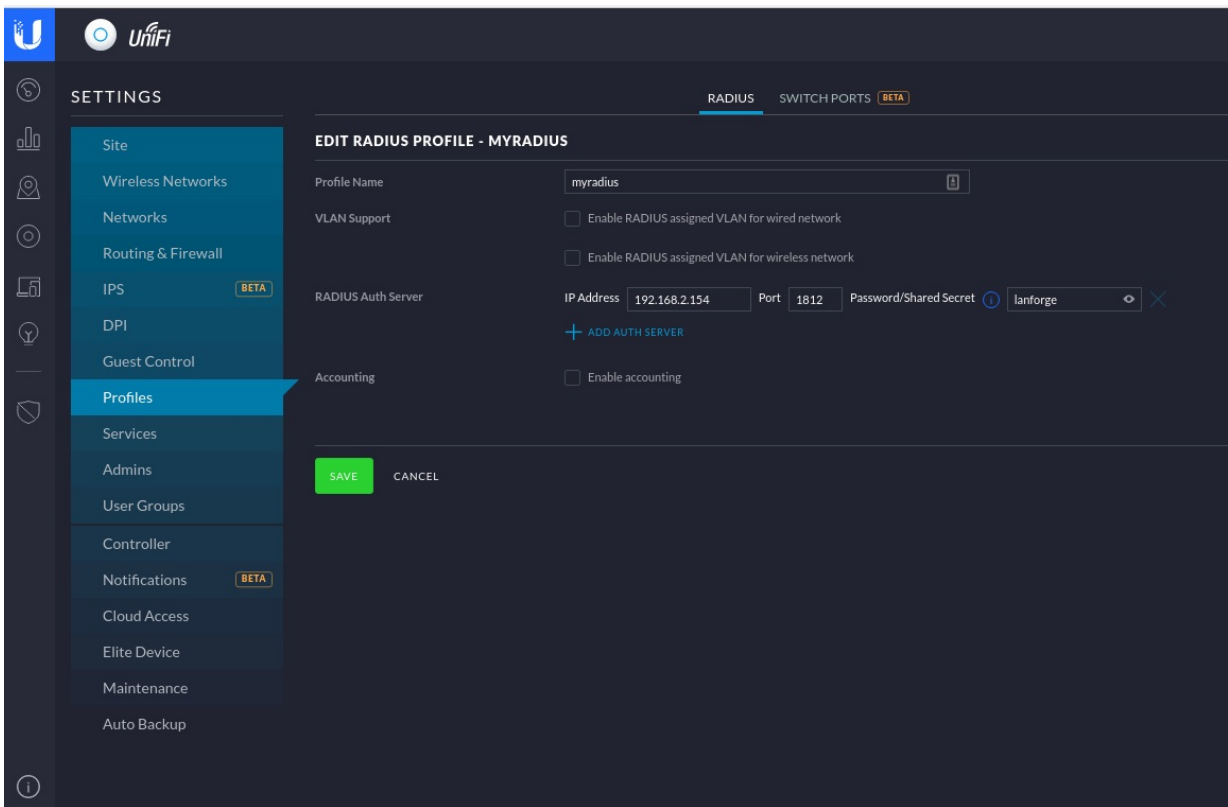
2. RADIUS Server has both EAP-PEAP and MSCHAPv2 configured for use.



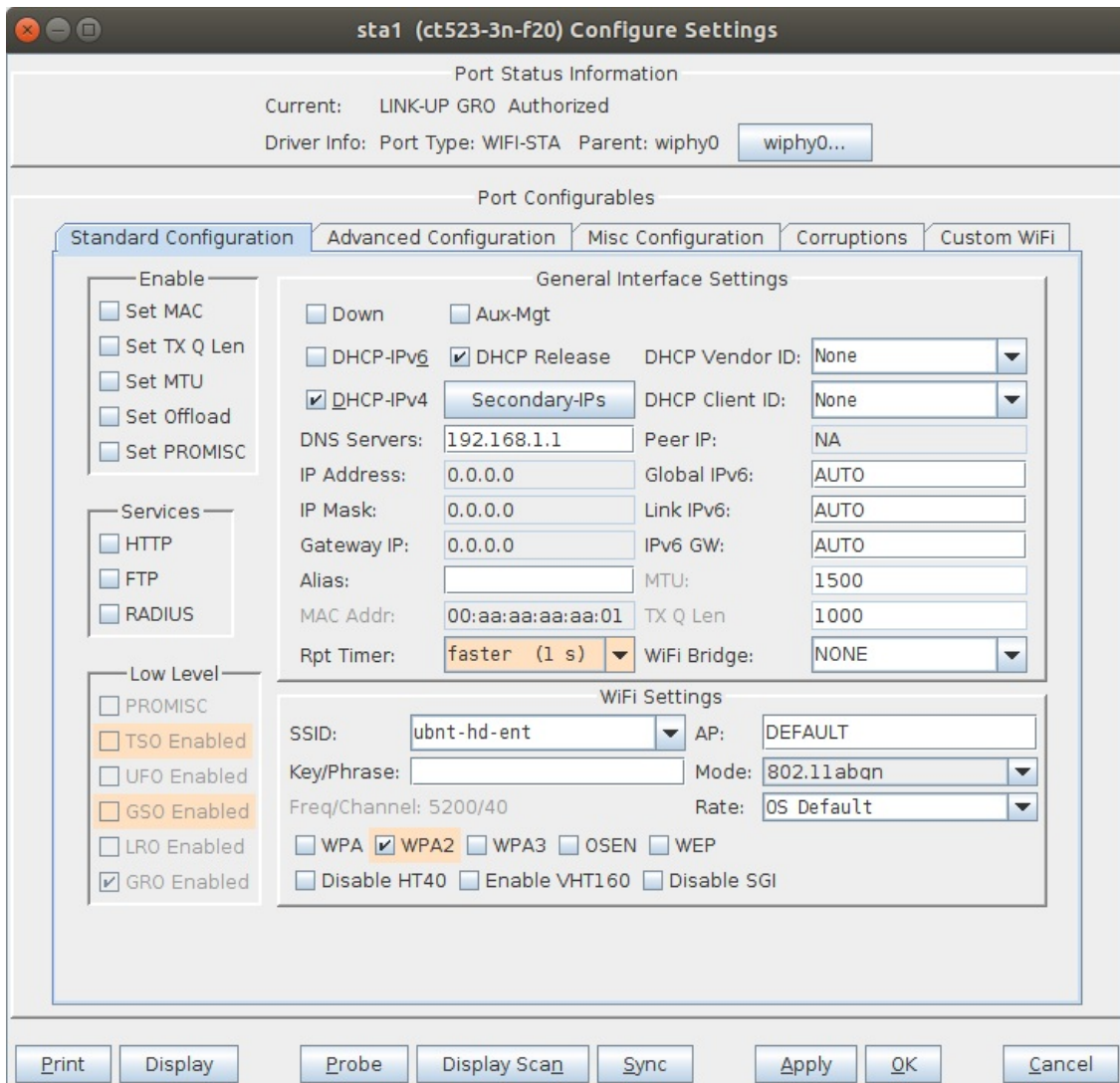
3. AP is a Ubiquiti HD AP with SSID ubnt-hd-ent with WPA Enterprise security.



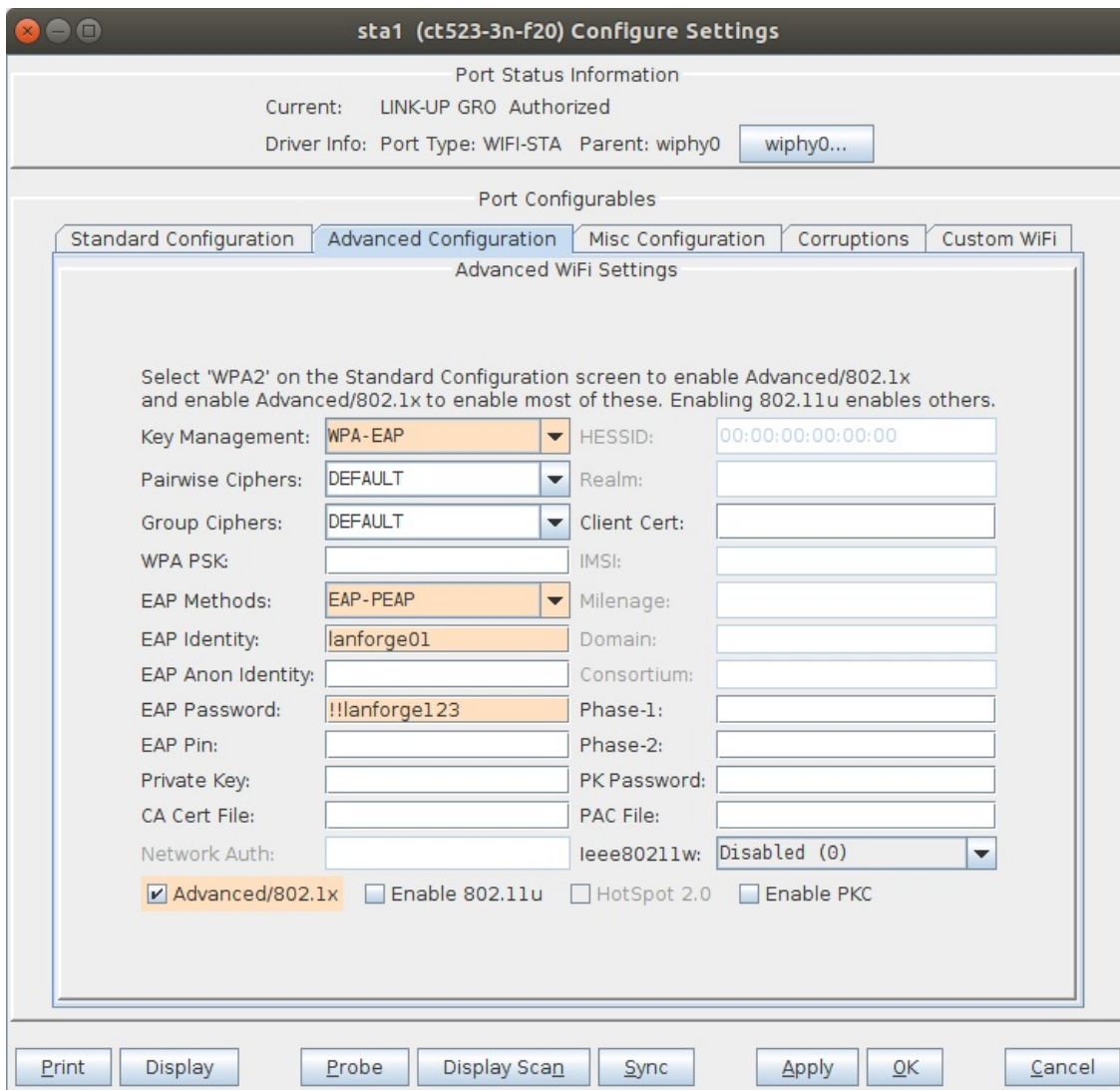
4. The AP controller points to the RADIUS server at 192.168.2.154.



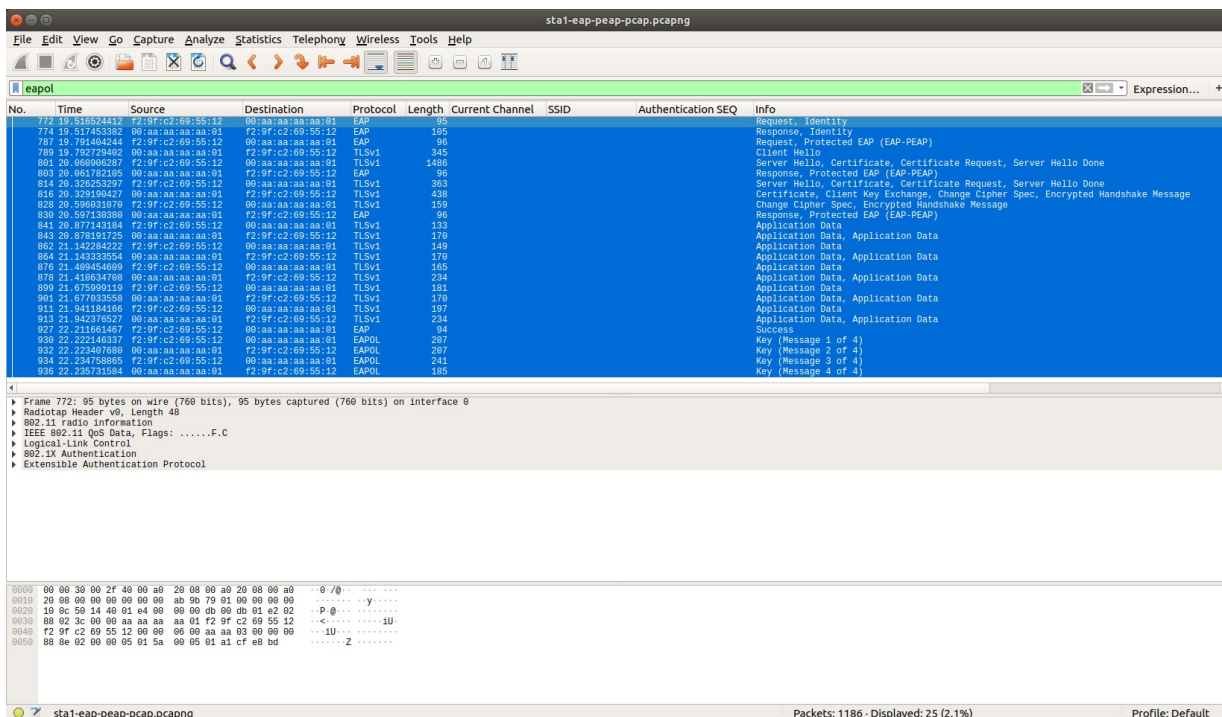
5. LANforge STA1 basic configuration:



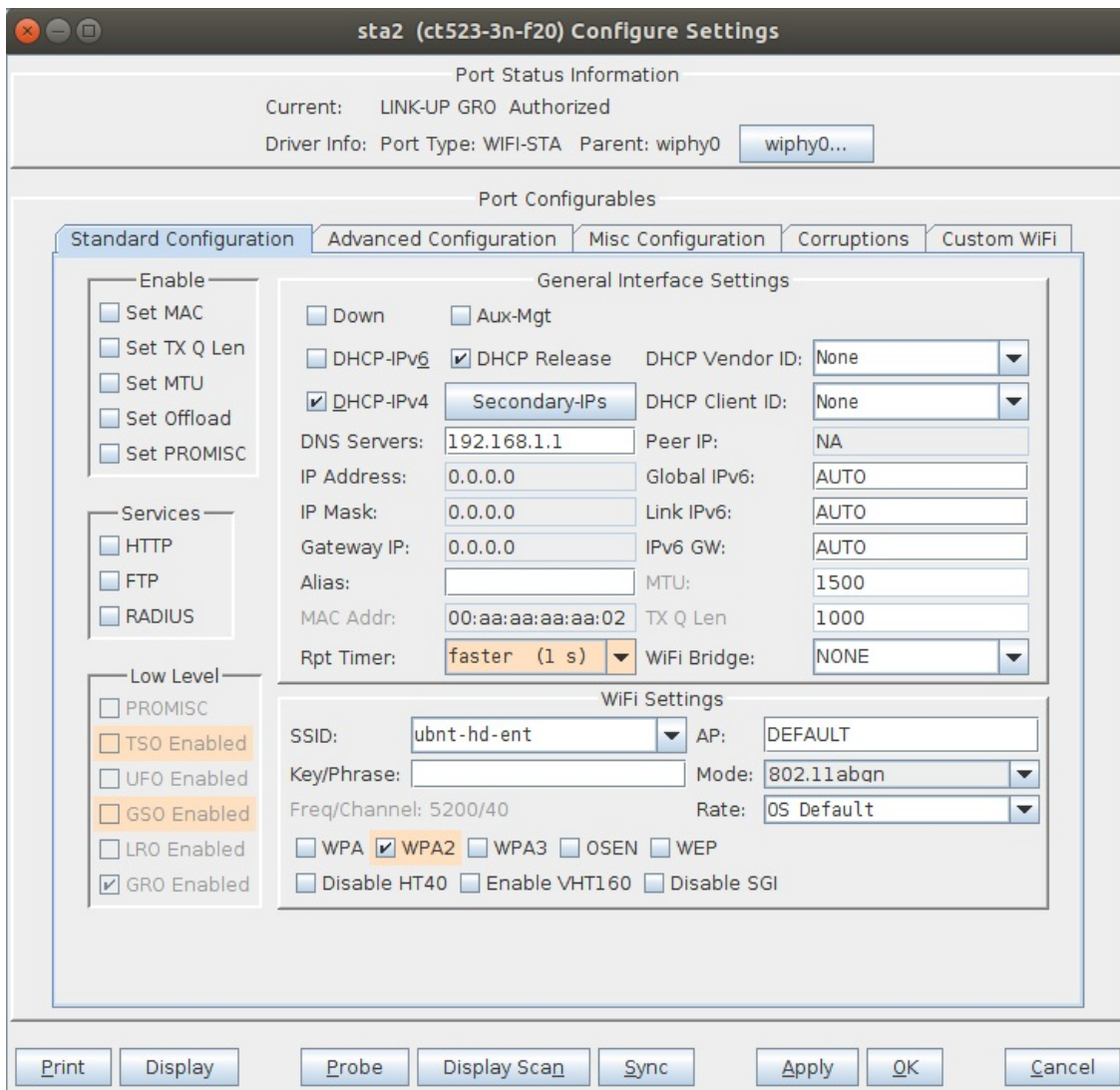
6. LANforge STA1 advanced configuration is using EAP-PEAP.



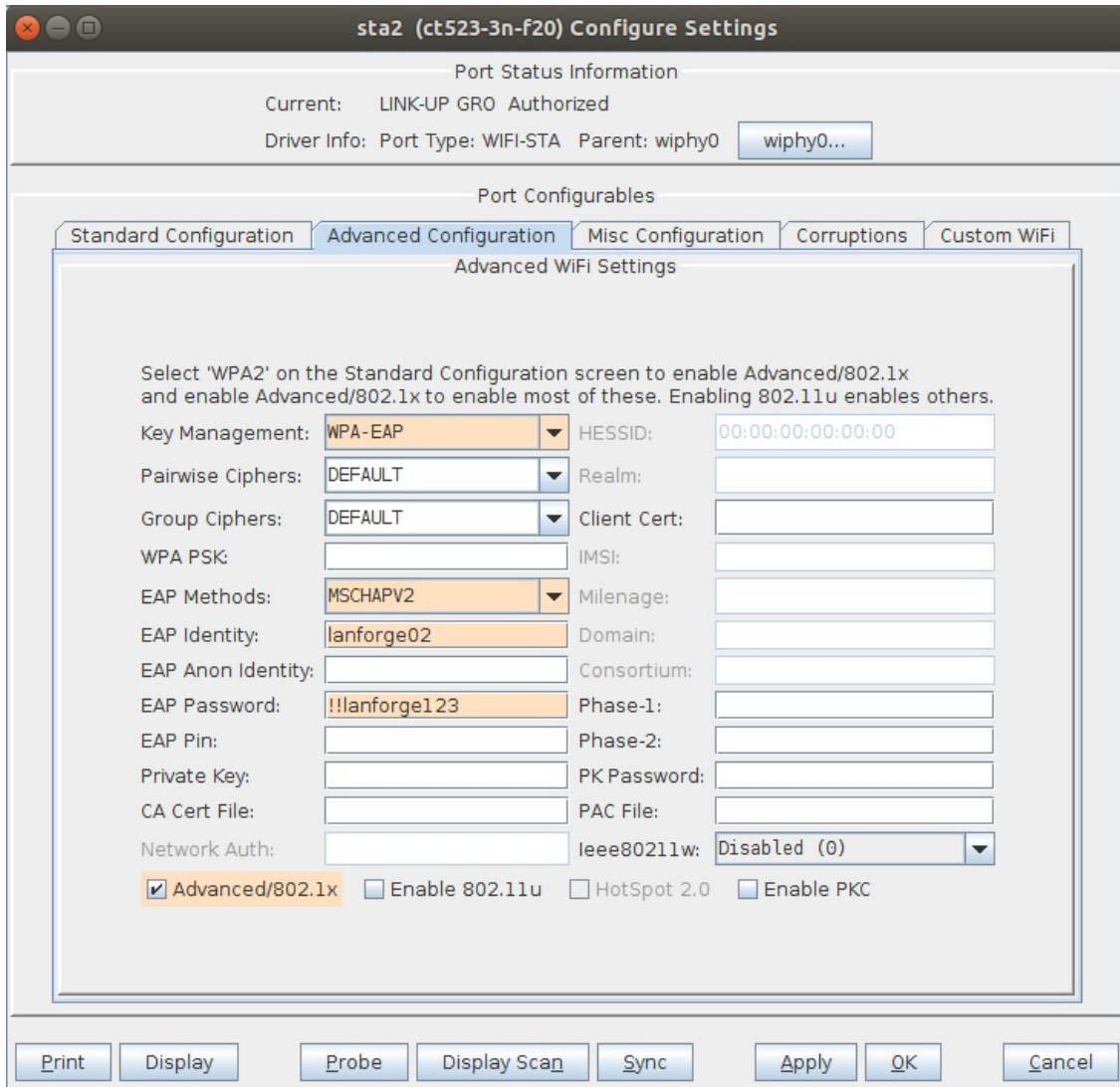
7. Wireshark capture of STA1 EAPOL authentication.



8. LANforge STA2 basic configuration:



9. LANforge STA2 advanced configuration is using MSCHAPv2.



10. Wireshark capture of STA2 EAPOL authentication.

